



The Hard Hat

National Association of Women in Construction **San Diego Chapter 21 Newsletter**

VOLUME 6, ISSUE 2 NOVEMBER 2011

The NAWIC Calendar

November 8

NAWIC SD Monthly Meeting
Hilton—Mission Valley

December 13

NAWIC SD Monthly Meeting and Holiday Party
Hilton—Mission Valley

December 24

Volunteer
Rachel Women's Center
Holiday Party

January 10

NAWIC SD Monthly Meeting
Hilton—Mission Valley

this issue

President's Message **P.1**
Industry Issues **P.2**
Committee Highlights **P.2**
Event Reports **P.3**
In the News **P.6**



San Diego Skyline

Message from the President

I can't believe that fall is already here! Where did the summer go to? Well, after the fifth pumpkin patch I have been to over the month of October, it feels much more like we are in the fall season! How many of you ate too much Halloween candy? I love this time of year when the weather changes and we start the holiday season. We all have a lot to be thankful for. Our chapter is still remaining strong at 54 members!

I have to say that I am thankful for all of my Committee chairs and their committee members. I know they have been hard at work planning their events for our upcoming year. The Block Kids event is on December 3rd and CAD Drafting will be in early 2012. Did you know that the Ways & Means committee is busy working on a Casino night in March? Our Professional Education Committee does a great job in planning all of our membership meetings. The membership committee is planning networking mixers, WIC Committee is planning WIC week in March, Anniversary Committee is planning our anniversary event in April, our Mentoring Committee is planning MAGIC camp, our Golf Committee is planning another successful Golf Tournament and the APC committee is planning our APC conference in October/November 2012! Do any of you want to help these committees? If so, please let me know and I will get you in touch with the Chair and/or Chairs.

NAWIC Chapter 21 was very busy in the month of October! There were four of us that made the trek up to Ventura for the annual APC Conference. What an exciting conference that taught us all about the Channel Islands Harbor, strategic planning, NEF, scholarships, Block Kids, CAD Drafting, etc., etc. If you were not able to attend, I hope that you can attend our next APC Conference that will be here in San Diego! Our Mentoring Committee hosted the 5th annual Chocolate Social at CTA and our Membership Committee "womaned" a table at the Blue Book Showcase. A fun time had by all!

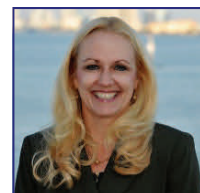
I hope that all of you have e-mailed Isabel with your RSVP for our upcoming meeting on November 8th. We will have it again at the Hilton in Mission Valley, but we will be meeting upstairs on the second floor that will better suit our needs for our chapter. I know that all of you will want to hear from Mary Vizzaccaro of the Department of Labor about Labor Compliance. Please send your RSVP to Isabel at: izmaracco@caspercompany.com by November 4th at Noon.

Please mark your calendar for December 13th because you won't want to miss our chapter's holiday party! This year will be a little different because we are inviting our family members to attend! We are also going to have a fun White Elephant Gift Exchange. Our chapter will once again volunteer to help out with Rachel's Women's Center holiday party on Christmas Eve too. Please stay tuned for more details to come!

As always, I am only an e-mail or phone call away if you need me!

Pat Brown

NAWIC President
San Diego Chapter #21





Committee Report Highlights

Professional Education Committee – October 11th, we held the topic that was most voted for on the surveys that were sent out to the chapter, "Self Defense for Women". Bret Smith was a great presenter and this turned out to be a great interactive dinner meeting.

November 8th - We will have Mary Vizzaccaro from Dept. of Labor, OFCCP, who will be talking to us on the topic of Compliance Assistance.

December 13th– The committee has decided to make this our Chapter Holiday Party. We want all the members to attend, relax, have a great time socializing, sing songs, play games, and to bring their family members. We are going to have somewhat of a White Elephant Gift Exchange. We will also be choosing a facility to donate to and will be asking them to present at the Holiday Party.

December 24th – Our chapter will be volunteering at Rachel's Women's Center at their Holiday Party for the homeless women. Volunteer details will be sent out to the chapter as they become available.

January 9th – Due to another overwhelming request on the surveys, we will be having someone from BB&T - John Burnham Insurance Services speaking to us on 401K's & Retirement Plans.

Ways & Means – The Ways & Means Committee is off to a great start this year! Thanks to all of you ladies that either donated items to the raffle at our October meeting or purchased raffle tickets. Specifically, we would like to thank Pat Brown from the AGC Plan Room, In-n-Out Burger, Lambs Players Theater, and Paradigm Mechanical for their donations last month. We are planning a dinner fundraiser soon, so please be on the lookout for that information. Ladies, we need your support, please make an effort to participate in any way that you can. Currently we have three committee members, we need more! You can be involved in many ways, including selling raffle tickets at our monthly meetings, getting donations from local businesses, or pitching in to help us organize one of our fundraisers this year. If you want to have some fun, and get to know other members, join the Ways & Means Committee. We have exciting events in the works for this year, including our first Casino Night that we are planning to kick off WIC week! Of course, we will throw in a few other fundraisers, including the popular wine tasting next spring or summer. If you have any ideas or would like to pitch in, please contact me at melinda@pmcontracting.com. Thank you!

WIC Week – The WIC Week Committee is still in the planning stage. WIC Week is March 4th through the 10th. I have tentative commitments from the Professional Ed committee to have a Tour on Tuesday the 6th. The Membership Committee is planning another Membership Mixer as well. Any Committee that might want to schedule an event during that week should contact me at llangworthy@dyna-sd.com so I can put it on the calendar. I also have WIC Week pins for Sale for \$1.00 on a first come basis. These are GREAT pins that are suitable to be worn anytime to Showcase NAWIC.



INDUSTRY ISSUES

...that impact Women in Construction

Submitted by Melinda Dicharry

Construction spending expected to improve over next 2 years

By Carlos Rico, The Daily Transcript
Friday, October 14, 2011

Chief economists from the design and construction industries who participated in economic forecast Thursday agreed that construction spending will increase over the next two years.

Power utility projects and non-building heavy engineering construction will be the major bright spots during the next two years, with multifamily housing being the somewhat positive area in residential construction.

"Total construction spending is already recovering and will improve next year," said Bernard Markstein, chief economist for **Reed Construction Data**, which predicts construction spending across the United States will fall from \$803.6 billion in 2010 to \$786.3 billion at the end of this year, and then increase to \$823.9 billion in 2012 and \$883.1 billion in 2013.

Ken Simonson, chief economist for the Associated General Contractors of America, anticipates construction spending will be up anywhere from 6 to 10 percent over the next two years.

Simonson said power and energy utility and infrastructure projects in the coal, wind, solar, geothermal and transmission line market will see the most increases.

As of August of this year, \$91 billion went to these markets, a 22 percent jump from a year ago and a 16 percent share of the nonresidential market.

"We see this arena continuing to rise over the next couple years," Simonson said.

In addition, Simonson expects the cost of construction materials to go up anywhere from 3 to 8 percent; labor costs to go up 2 to 4 percent; and bid prices to increase 2 to 5 percent.

Other nonresidential construction markets that show some positive outlook include manufacturing, warehouse and distribution, and hospitals.

Overall, nonresidential construction spending is expected to drop to from \$288.9 billion in 2010 to \$275.8 billion by the end of this year, but rise to \$289.5 billion in 2012 and \$314 billion by 2013.

"Nonresidential construction building will strengthen throughout 2012 and 2013," Markstein said.

Continued on Page 4

Mentoring Committee - CTA Chocolate Social

Submitted by Linda Young, CBT, CIT

Forty Ladies of CTA gathered for our 5th Annual Chocolate Social – an event meant to bond together female students from CTA, students from SDSU and women in the construction industry. Chocolate dippables were enjoyed by all!



Inspiration CORNER

PRESENT

Faith IS success in life
Faith is the catalyst within
Faith is the belief to begin
Faith is the foundation and the frame
Faith is the power that helps you WIN
Faith is the concentration of your brain
Faith is the power to know and to do
Faith is the cure for 'NO' and those that 'Lose'
Faith is your spirit, your sinews, your soul
Faith is the body that truly has all control
Faith is the beginning and the end
Faith is everything therein
Faith can move mountains and valleys and hills
But faith can do NOTHING . . .
Unless YOU are there.

- Jeff Rushton

NOVEMBER BIRTHDAYS

Happy birthday Ladies!

- Nancy Walker** - 4th
- Anita Villani-Barnes** - 9th
- Pat Brown** - 19th
- Sherry Yarbrough** - 29th



Continued from Page 2

Heavy engineering non-building construction, which includes markets like highway and water/sewer infrastructure projects, is expected to spend \$263.7 billion in 2011, \$281.3 billion in 2012 and \$300.9 billion in 2013.

"Heavy engineering non-building construction (will) perform the best over the forecast period," Markstein said.

San Diego home prices fell 7 percent from August 2010 to August 2011, one of the top 10 markets across the United States with the largest decrease. Kermit Baker, chief economist for the American Institute of Architects, said because of this and because there are still too many foreclosed homes on the market, new home construction will continue to decrease over the next two years.

However, multifamily housing will be one of the few bright areas in residential construction, along with improvements to existing homes.

"Residential construction, after being hammered, is barely holding its own," Markstein said. "Multifamily construction is the one (relatively) bright spot in housing."

Residential improvement spending will be up from \$112.5 billion in 2010 to \$118.6 billion in 2012, and \$127.7 billion in 2013.

Source URL:

<https://www.nlrb.gov/news-media/fact-sheets/final-rule-notification-employee-rights>

Enhancing the Success of Women in the Construction Industry



NAWIC San Diego Chapter #21
PO Box 880725
San Diego, CA 92168

www.nawicsd.org

2011-2012 NAWIC Officers & Board

President
Pat Brown

Vice President
Teran Breceda

President-Elect
Brittni Banks-Engle

Recording Secretary
Lindsey Myers

Corresponding Secretary
Pam Gibbs

Treasurer
Linda Young, CBT, CIT

Immediate Past President
Lorelee Langworthy, CIT, CDS, CBT

Directors
Julie Brennan, ARM, CRIS
Melinda Dicharry
Dottie Ledesma
Isabel Marocco
Jan Parthemer
Myrna Smith, CIT

Parliamentarian
Sherry Yarbrough, CIT

Committees

Committees Coordinator
Teran Breceda
Anniversary / Executive Night
Dianne Koehle
APC 2012
Linda Young, CBT, CIT
Block Kids
Julie Brennan
Continuing Education
OPEN
Drafting
Sherry Yarbrough, CIT & Myrna Smith, CIT
Finance
Linda Young, CBT, CIT & Pam Gibbs
Friendship/Cheer
Lindsey Myers
Golf
Paula Covert & Kathy Jo Esposito
Hospitality, Attendance & Welcome Desk
Isabel Marocco
Membership
Dottie Ledesma & Lissa Palmer
Mentoring / MAGIC Camp
Linda Young, CBT, CIT & Jan Parthemer
Professional Education, Construction Industry & Partnering Liaison
Myrna Smith, CIT
Publicity, Outreach & Public Relations
Liz Fernandez
Scholarship
Ana Márquez & Isabel Marocco
Standing Rules
Gwen Miller
Ways & Means
Melinda Dicharry
WIC Week
Lorelee Langworthy, CIT, CDS, CBT
Website Coordinator / Newsletter Editor
Ana Márquez

NAWIC Kids



Clockwise: Anita Villani-Barnes' granddaughter is ready to join us in the workforce! Melinda Dicharry's son, Dylan is almost a year old, and truly enjoyed the pumpkin patch! Pat Brown's son, Brandon is now 4 years old!

For individual contact information, please visit our website.

Have an idea? An article to submit? Please email them to amarquez@gafcon.com.