



The Hard Hat

National Association of Women in Construction **San Diego Chapter 21 Newsletter**

VOLUME 6, ISSUE 3 DECEMBER 2011

The NAWIC Calendar

January 10

NAWIC SD Monthly Meeting
Hilton—Mission Valley

March 3

NAWIC Scholarship
Submission Deadline

this issue

President's Message **P.1**
Industry Issues **P.2**
Committee Highlights **P.2**



The San Diego Skyline all dressed up for the Holidays

Message from the President

Happy Holidays!

I hope that all of you had a safe and happy Thanksgiving! Mine was spent with my wonderful family and friends in Las Vegas! What a fun time to go to this exciting city! Brandon is old enough to enjoy Adventuredome! I didn't think we would ever leave after he rode the same rides at least three times! Well, it was fun waving at everyone from the float at the "Show in the Sky" at the Rio.

As most of you have heard by now, our Block Kids event has been moved from the original date of December 3rd to a later date in February 2012. There is so much planning involved with this wonderful event that our fantastic committee needed more time to prepare. Please stay tuned for the new date for this event.

Our December meeting (holiday party) will be a little different than in years past, but still very fun! We will have plenty of time to socialize, sing songs, play games and this year, we encourage everyone to bring their families. There will be a "white elephant" gift exchange which we ask everyone to bring a gift valued at \$10.00. This year, we will have Susanne Torre from Polinksys speak to us about their "Promises2Kids" program. I personally volunteered many hours of my time years ago to help out with the children at Polinksys and find it a wonderful center for the children that live there. Please look at the list that has been e-mailed along with the membership flyer to see the list of items that Polinksys needs to care for the many children that live at their center. If you are able to bring at least one item on their wish list, it would be greatly appreciated.

The Ways & Means committee has been hard at work planning another Funraiser event on December 15th at Rubios from 2:00 p.m. to closing. If you take the flyer e-mailed out earlier to either the Mira Mesa or El Cajon location, they will donate 20% of the total proceeds back to our chapter.

On December 24th, we will be volunteering again at Rachel's Women's Center to help with their holiday party. My husband and I volunteered last year and found it to be a very rewarding experience. If you can donate at least two hours of your time, you will be very glad you did.

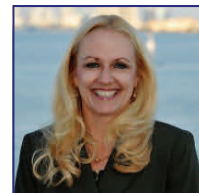
Due to an overwhelming request on the surveys, we will have Jon Greulich and Pam Legge from John Burnham Insurance speak to us on January 10th about 401Ks, retirement plans and health care reform. You won't want to miss this very informative membership meeting!

I look forward to seeing all of you at the December 13th meeting!

May peace and joy be yours during this wonderful season and the coming new year!

Pat Brown

NAWIC President
San Diego Chapter #21





Committee Report Highlights

Professional Education Committee

The committee has decided to make this our Chapter Holiday Party. We want all the members to attend, relax, have a great time socializing, sing songs, play games, and to bring their family members. We are going to have somewhat of a White Elephant Gift Exchange, and ask that everyone bring a wrapped \$10 gift. For our Community Outreach, we have chosen Promises 2Kids – Polinsky's Children's Center Foundation. We will have Susanne Torre from the organization speak to us on all that they do. We have also sent out a "wish list" of items that can be donated to the organization.

December 24th – Our chapter will be volunteering at Rachel's Women's Center at their Holiday Party for the homeless women. Volunteer details will be sent out to the chapter as they become available.

January 9th – Due to another overwhelming request on the surveys, we will have Jon Greulich from BB&T - John Burnham Insurance Services speak to us on 401K's & Retirement Plans and Pam Legge from BB&T - John Burnham Insurance Services speak to us on Health Care reform update.

Ways & Means

The Ways & Means committee has set up a great dinner Fun-Raiser at Rubio's on Thursday, December 15th from 2:00pm to closing. This is for the Mira Mesa and El Cajon restaurants and includes catering/to-go orders from both locations. Catering orders can be placed online or at the restaurant, but need to be made 24 hours in advance. This is a great opportunity for us to raise money for our NAWIC Chapter!

Thanks to all of you ladies that either donated items to the raffle at our November meeting or purchased raffle tickets. Specifically, we would like to thank Pat Brown from the AGC Plan Room, the San Diego Chargers, and Paradigm Mechanical for their donations last month. I would also like to thank Sherry Yarbrough and Shayne Dahlstrom for assisting me with the raffle at November's meeting.

Ladies, we need your support, please make an effort to participate in any way that you can. You can be involved in many ways, including selling raffle tickets at our monthly meetings, getting donations from local businesses, or pitching in to help us organize one of our fundraisers this year. If you want to have some fun, and get to know other members, join the Ways & Means Committee. If you have any ideas or would like to help, please contact me at melinda@pmcontracting.com. Thank you!

Scholarship

Applications have been distributed to local schools. Please visit our website for a copy of an application. Submission deadline is March 3, 2011.



INDUSTRY ISSUES

...that impact Women in Construction

Submitted by Melinda Dicharry

President Signs 3% Withholding Tax Repeal Into Law

November 23, 2011

Repeal of the three percent withholding tax repeal contained in section 511 of the Tax Increase Prevention and Reconciliation Act of 2005 (TIPRA) was signed into law by President Barack Obama on Nov. 21.

The bill, H.R. 674, was passed in a 422-0 vote by the U.S. House of Representatives on Nov. 16 and was approved a week earlier by a unanimous vote in the Senate. The bill amends the Internal Revenue Code to repeal the 3 percent withholding tax for government contractors.

The withholding mandate, hidden in the fine print of TIPRA, would have required 3 percent to be withheld on all payments for goods and services made by federal, state and local governments with total expenditures of \$100 million or more beginning Jan. 1, 2013. Implementation of the provision had been subject to annual delays by Congress and regulators, respectively, until bipartisan support for repeal coalesced during the recent focus on jobs legislation.

Source URL:

http://www.abc.org/Newsroom2/News_Letters/2011/Issue_47/President_signs_3_percent_withholding_tax_repeal_into_law.aspx

Construction Backlog up from a year ago; no new projects

By CARLOS RICO, The Daily Transcript

Tuesday, November 15, 2011

Project inventory for construction firms dipped slightly in the West during the third quarter of 2011, but still stayed above seven months, according to the latest Construction Backlog Indicator report released by the Associated Builders and Contractors on Tuesday. In this year's third quarter, construction backlog for the West region measured 7.40 months, a minimal loss from the second quarter of 2011, which showed backlog at 7.94 months.

There is, however, a steady improvement from the last two years. The third quarter in 2010 indicated a backlog of 6.85 months and the third quarter of 2009 measured 6.41 months. The average backlog, from the several hundred ABC member firms that were surveyed, around the United States in the third quarter was 8.08 months; up from 6.95 months in the third quarter of 2010 and 5.87 months in third quarter of 2009.

Continued on Page 4



January Meeting
**Looking
 Ahead**

NAWIC San Diego #21

Presents guest speakers:

Jon Greulich & Pam Legge

of

BB&T

**John Burnham Insurance
 Services**

On the topics

**Retirement and
 Health Care Reform**

Whether you're saving for retirement, or health care costs, you won't want to miss this month's speakers.

Jon Greulich, Senior VP, Benefits, will talk about key issues to consider when planning for retirement.

Pam Legge, Senior VP, Benefits, will provide an update on Health Care Reform, and important items to be aware of for 2012.

**Tuesday, January 10, 2012
 5:30 Networking
 6 PM Program**

Members \$35
 Non-members \$40

at the
 Hilton Hotel
 901 Camino del Rio S.
 San Diego, CA 92108

RSVP Deadline:
 Friday, January 6, 2012
 Please send in your reservation to
 Isabel Marocco - Fax: 619-589-1796
 Email: izmarocco@caspercompany.com

Meal Preference:
 Chicken w/Lemon Caper Picatta Sauce
 London Broil w/Wild Mushroom Demi Glaze
 Spinach Ricotta Ravioli

Inspiration
CORNER

Christmas Time

Christmas Time is finally here,
 It only comes but once a year.
 And it's a time to spread good cheer,
 To those we love and hold so dear.

Christmas Time is a time of glee,
 A time when peace and love run free.
 A time for those like you and me,
 To sit beneath the Christmas Tree.

Christmas Time is a time of joy,
 A time to sit back and enjoy.
 The smile on each girl and boy,
 As they play with a Christmas Toy.

Christmas Time is a time to share,
 The passing of another year.
 Birth of Jesus, a joyful prayer,
 To show loved ones how much we care.

Christmas Time is a time for song,
 A time for us to get along.
 To make us feel Lord Jesus strong,
 Forgive all those who did us wrong.

Christmas Time is a time to pray,
 Put love and kindness on display.
 Show compassion along the way,
 Christmas Time should be everyday.

- Ronald Doe



DECEMBER BIRTHDAYS

Happy birthday Ladies!

**Pam Gibbs - 15th
 Laura Hobbs - 18th**



Continued from Page 2

Anirban Basu, chief economist for the Associated Builders and Contractors, said while there is some optimism to take from the latest report measuring the amount of construction work under contract to be completed in the future, the numbers are a bit misleading, in that there is no new work coming online. "Part of the reason is that contractors have been folding in the last two years, and more established firms are scooping up (projects) of those companies that have folded," Basu said. "So now you have fewer contractors out on the market and not necessarily new work. The projects are just shifting builders."

Basu added that less than eight months of backlog is associated with construction spending declines, while a backlog exceeding eight months is statistically linked with future construction spending increases. "Today's level of backlog is consistent with flat construction spending," he said.

The latest quarterly Construction Backlog Indicator also points out over the last two years, the percentage of companies that have more than 12 months of backlog has increased. In the third quarter of 2011, 30 percent of firms had a backlog greater than 12 months. In 2010, 19 percent of firms had more than 12 months of backlog and in 2009, only 15 percent of firms had a backlog of more than 12 months. "This means contractors are busier now than what they were two years ago," Basu said. "But again this is not because there are new projects out in the market."

Construction firms with revenues of more than \$100 million in the third quarter of 2011 had the most backlog at 9.79 months; with firms that have \$50 million to \$100 million at 9.7 months. Contractors with revenues of \$30 million to \$50 million had a backlog of 7.25 months; while construction companies with \$30 million or less in revenue in this year's third quarter had a backlog of 7.12 months.

Compared to a year ago, firms with revenues of more than \$100 million had a backlog of 8.13 months; followed by firms that have \$50 million to \$100 million in revenue at 8.16 months, contractors with revenues of \$30 million to \$50 million at 6.64 months and companies with \$30 million or less in revenues at 6.21 months.

"Many of these larger firms are involved in the energy and power category, which has expanded faster in terms of construction spending during the past year than any other nonresidential construction segment," Basu said.

"In contrast, the loss of construction backlog among smaller firms is consistent with recent data indicating many specialty trade contractors are now reducing staffing levels."

Enhancing the Success of Women in the Construction Industry



NAWIC San Diego Chapter #21
PO Box 880725
San Diego, CA 92168

www.nawicsd.org

2011-2012 NAWIC Officers & Board

President
Pat Brown

Vice President
Teran Breceda

President-Elect
Brittini Banks-Engle

Recording Secretary
Lindsey Myers

Corresponding Secretary
Pam Gibbs

Treasurer
Linda Young, CBT, CIT

Immediate Past President
Lorelee Langworthy, CIT, CDS, CBT

Directors
Julie Brennan, ARM, CRIS
Melinda Dicharry
Dottie Ledesma
Isabel Marocco
Jan Parthemer
Myrna Smith, CIT

Parliamentarian
Sherry Yarbrough, CIT

Committees

Committees Coordinator

Teran Breceda
Anniversary / Executive Night

Dianne Koehle
APC 2012

Linda Young, CBT, CIT

Block Kids

Julie Brennan

Continuing Education

Christina Denning

Drafting

Sherry Yarbrough, CIT & Myrna Smith, CIT

Finance

Linda Young, CBT, CIT & Pam Gibbs

Friendship/Cheer

Lindsey Myers

Golf

Paula Covert & Kathy Jo Esposito

Hospitality, Attendance & Welcome Desk

Isabel Marocco

Membership

Dottie Ledesma & Lissa Palmer

Mentoring / MAGIC Camp

Linda Young, CBT, CIT & Jan Parthemer

Professional Education, Construction Industry

& Partnering Liaison

Myrna Smith, CIT

Publicity, Outreach & Public Relations

Liz Fernandez

Scholarship

Ana Márquez & Isabel Marocco

Standing Rules

Gwen Miller

Ways & Means

Melinda Dicharry

WIC Week

Lorelee Langworthy, CIT, CDS, CBT

Website Coordinator / Newsletter Editor

Ana Márquez

Congratulations!

Congratulations to Elizabeth on the addition of a new granddaughter, Lysette.

